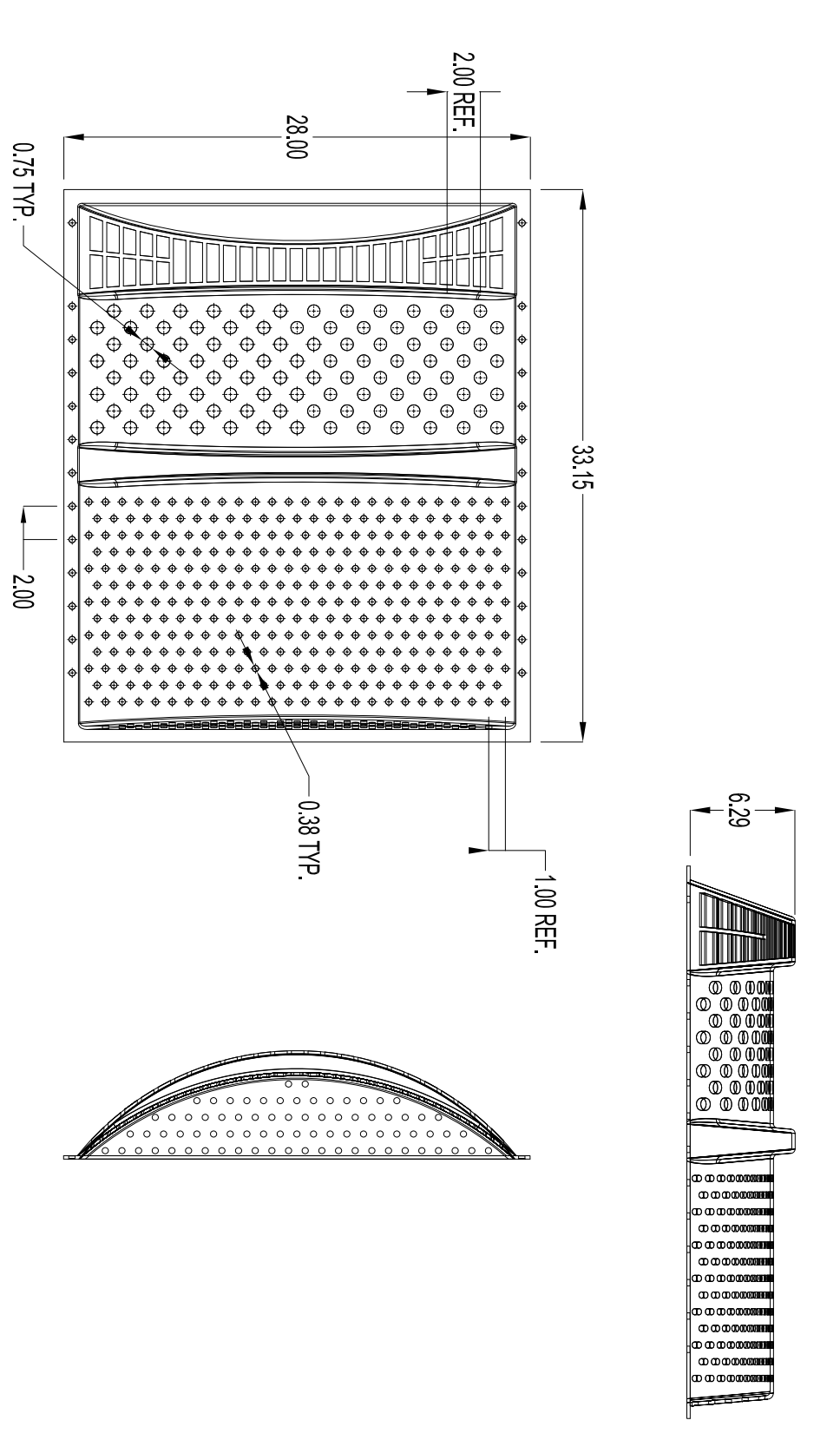
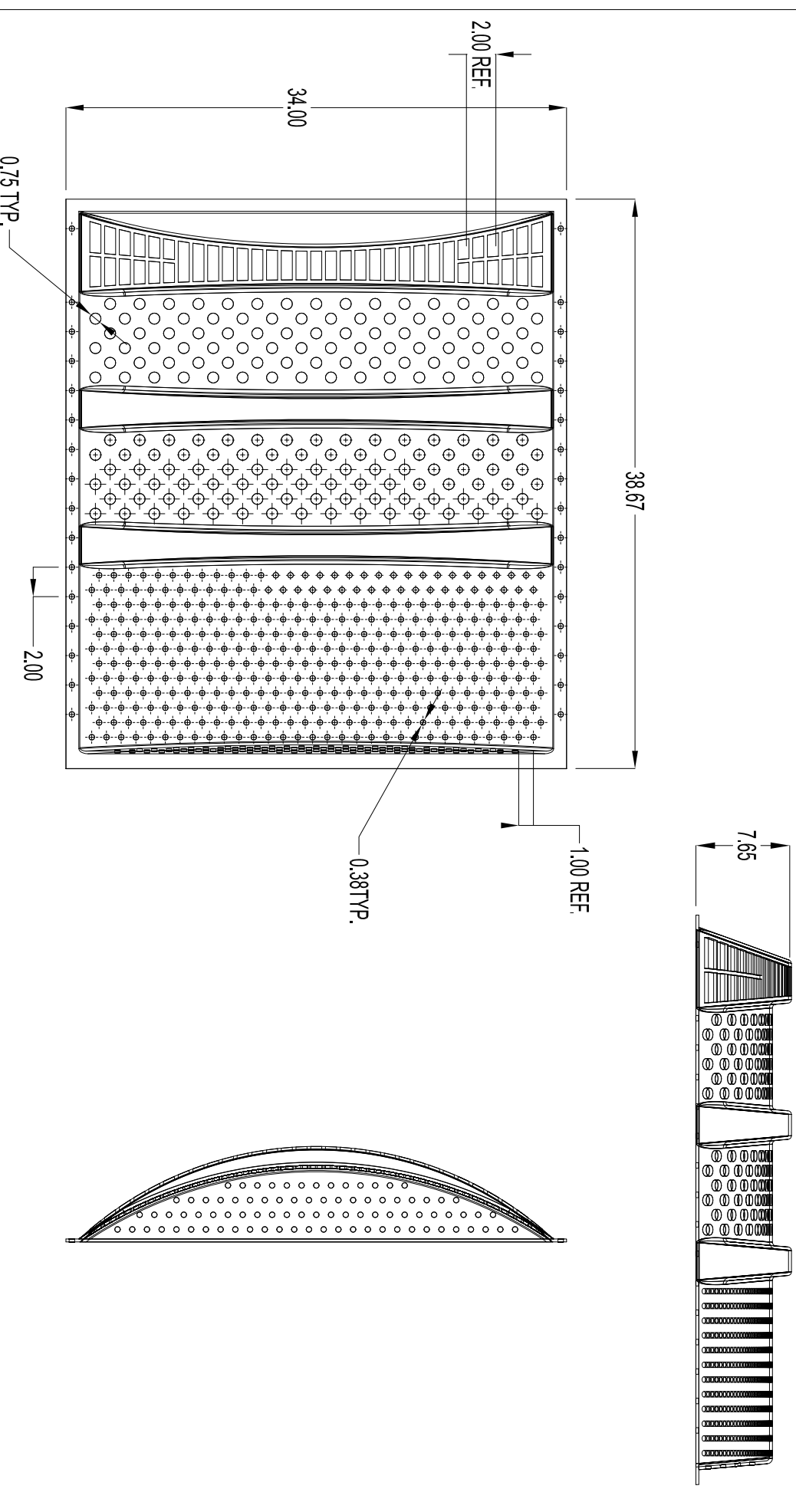


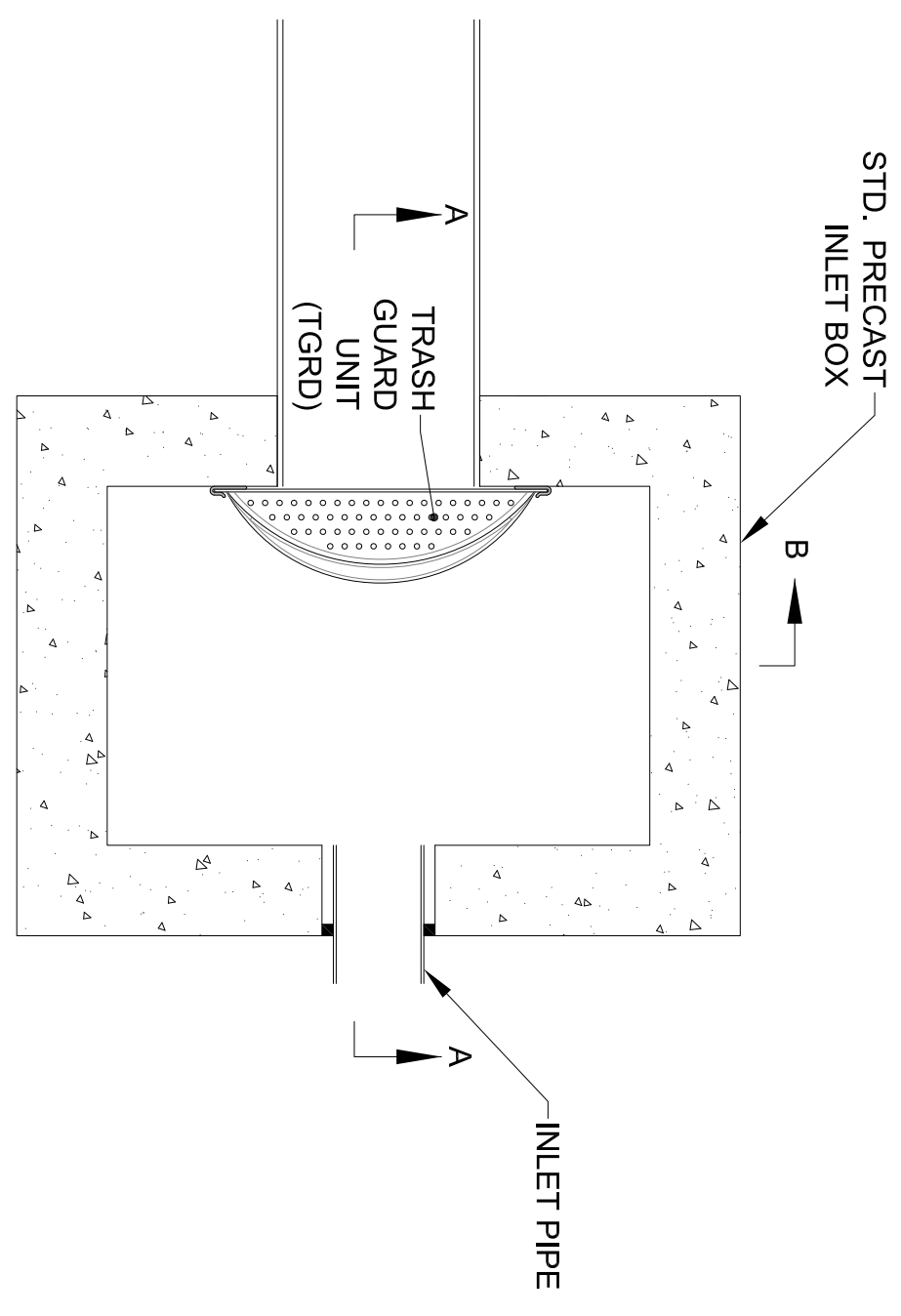
1 TRASHGUARD PLUS MODEL TGRD23X24P DETAIL



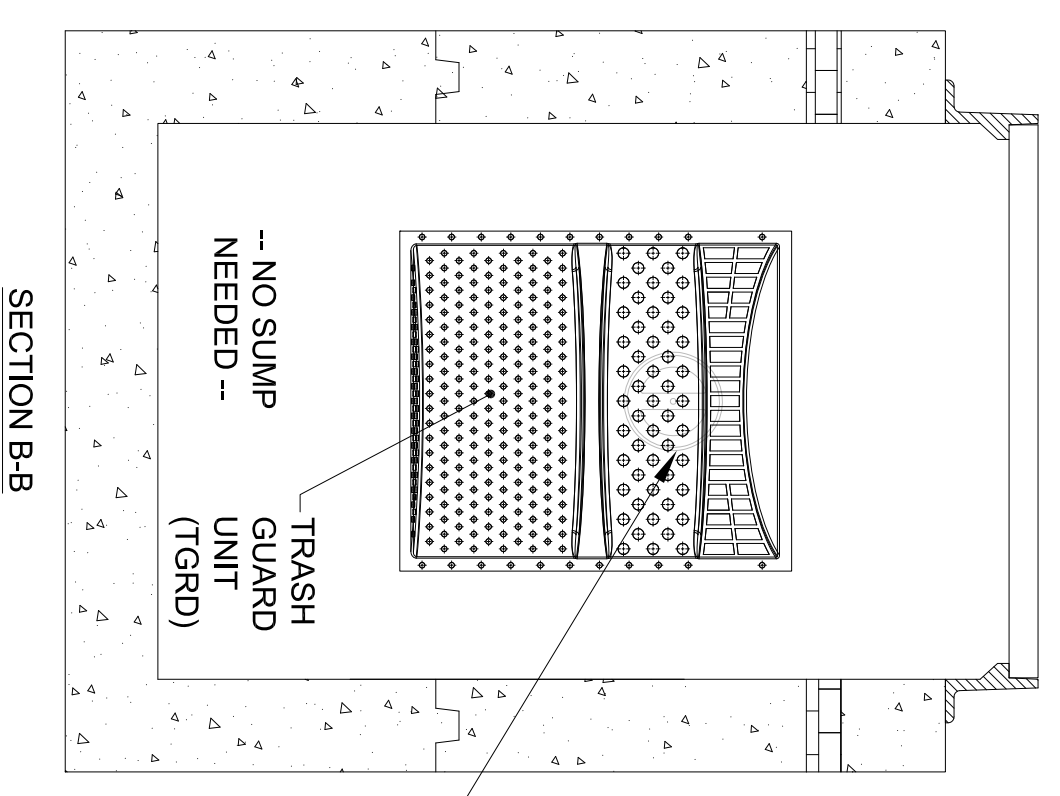
2 TRASHGUARD MODEL TGRD28X30P DETAIL



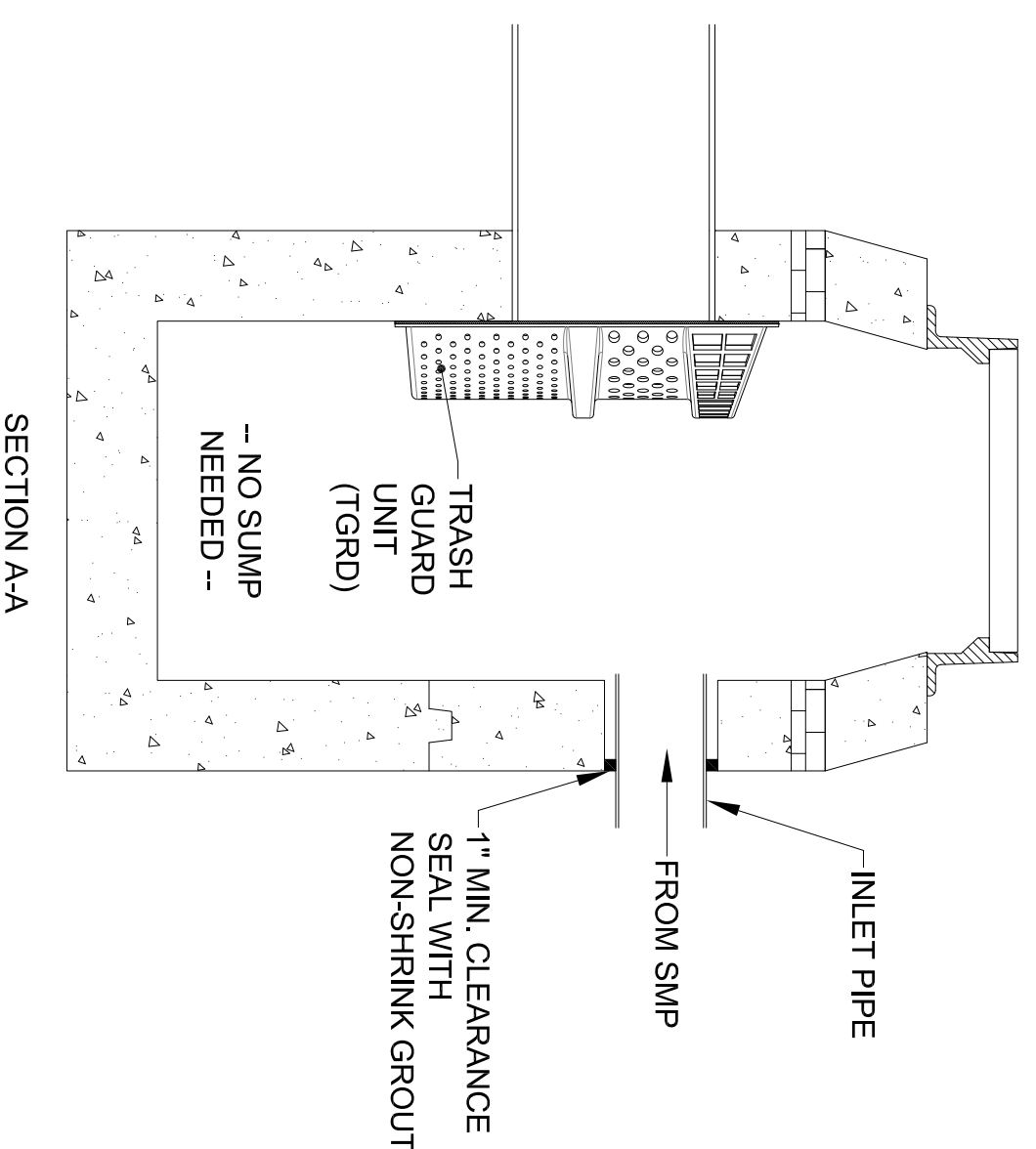
3 TRASHGUARD MODEL TGRD34X36P CUT DETAIL



- NOTES:
1. ALL CONCRETE COMPONENTS, INLET GRATE AND FRAME, INLET TRAP, AND CONNECTION TO SEWER SHALL BE STANDARD CONSTRUCTION.
  2. HIGHWAY INLET DEPICTED: DESIGN IS GENERALLY APPLICABLE TO ALL STANDARD INLETS.
  3. TRASH GUARD PLUS (TGRD) UNIT AND "PWD TGP HARDWARE KIT" TO BE PROVIDED BY ACF ENVIRONMENTAL
  4. SEE TRASH GUARD INSTALLATION DETAIL FOR GUIDANCE ON INSTALLING UNIT.
  5. SEE TRASHGUARD UNIT DETAILS FOR SYSTEM DIMENSIONS AND AVAILABLE SIZES.
  6. "RAIL STOP BOLT" NOT NEEDED FOR THIS APPLICATION
  7. NO "SUMP" IS REQUIRED FOR THE TRASHGUARD PLUS TO FUNCTION CORRECTLY.



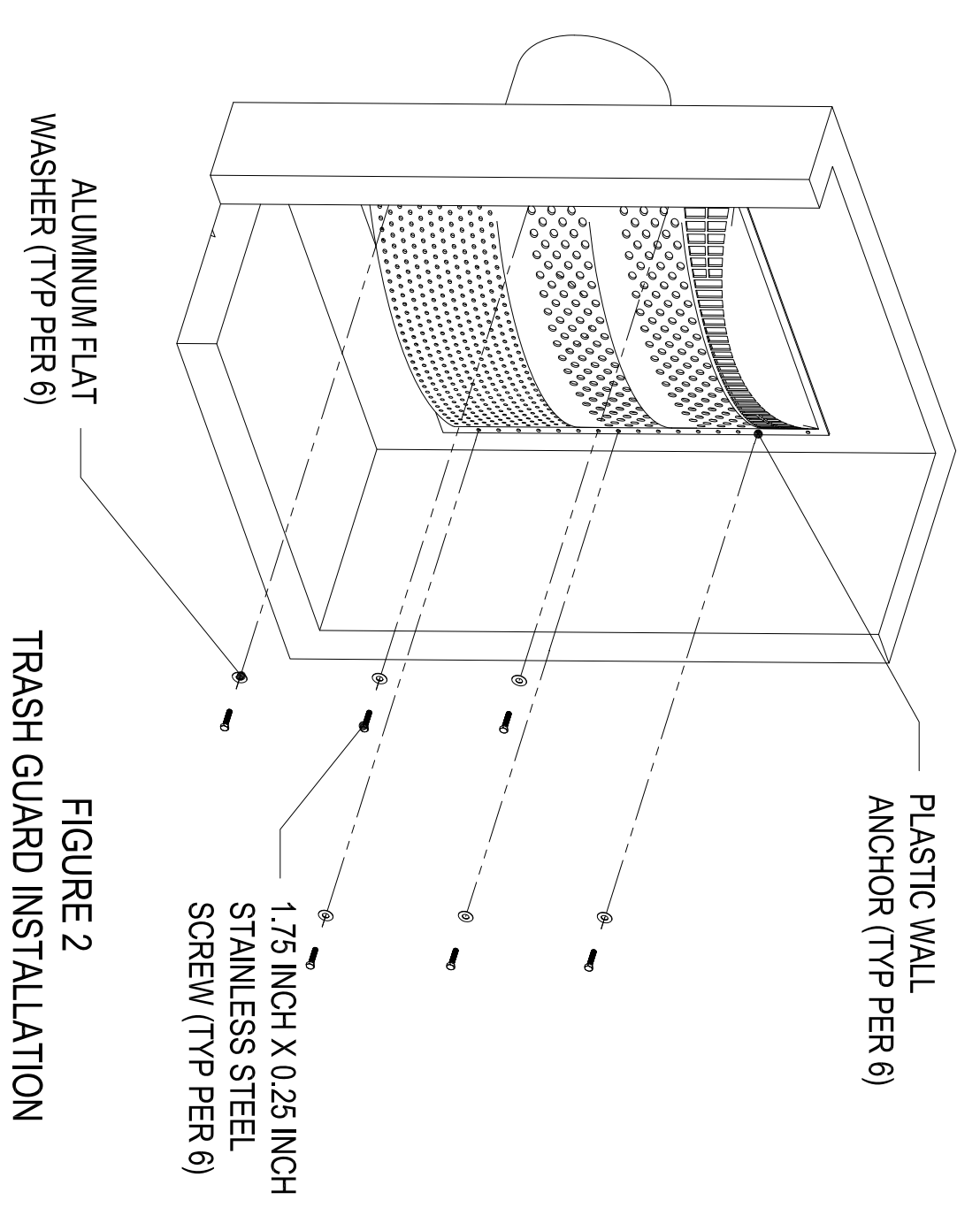
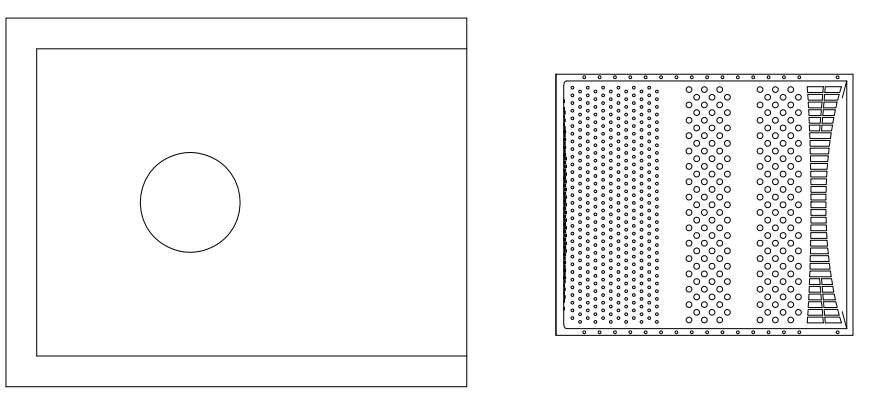
4 SECTION BB



SECTION AA

TRASH GUARD PLUS GREEN INLET DETAIL

FIGURE 1 - PRE INSTALLATION



5

TRASH GUARD PLUS UNIT (TGRD) STANDARD INSTALLATION DETAIL

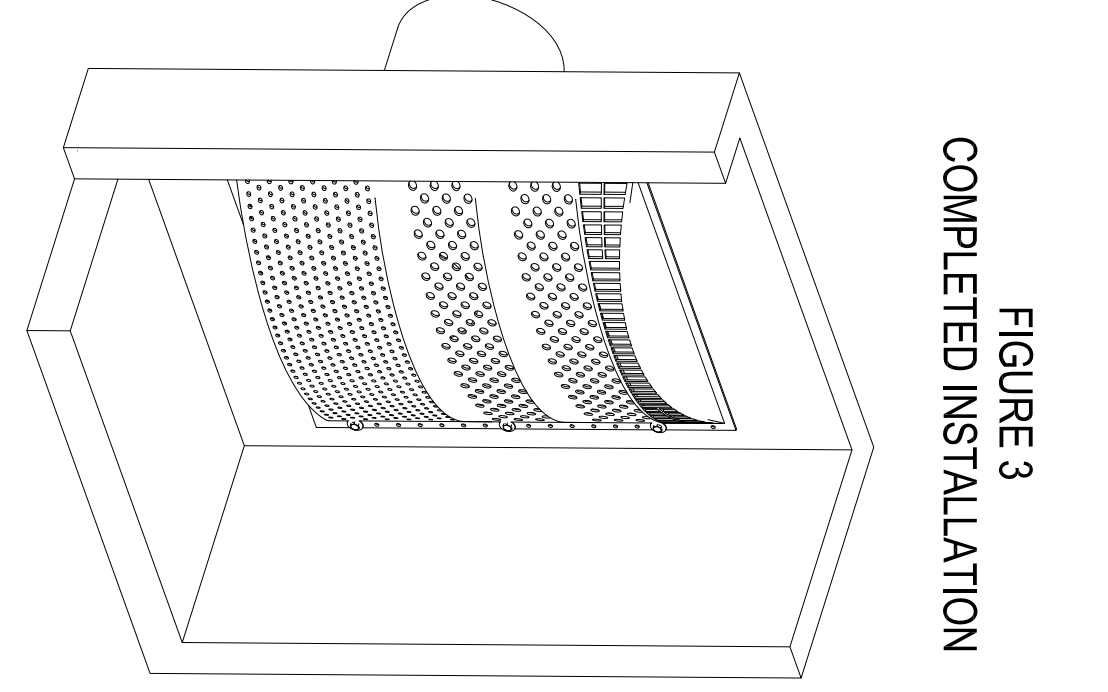


FIGURE 3 COMPLETED INSTALLATION

# TRASHGUARD PLUS INSTALL DETAILS



FOR ADDITIONAL INFORMATION PLEASE CONTACT:  
ACF ENVIRONMENTAL, 1-800-448-3636  
www.acfenvironmental.com

DATE	REVISION
07.27.16	ISSUED FOR INTERNAL REVIEW
10.11.16	UPDATED

PROJECT NO.

DATE  
JUNE 30, 2016

SHEET NO.

## TG-1