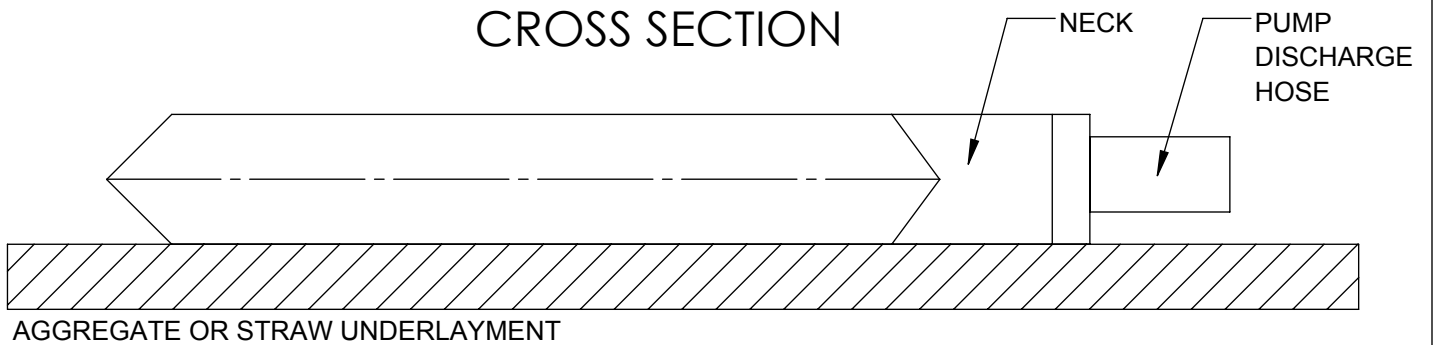


NOTES:

- 1) DIRTBAG TO BE PLACED ON AGGREGATE OR STRAW
- 2) SEAMS MUST BE HIGH STRENGTH DOUBLE STITCHED "J" SEAMS
- 3) SEAM MUST BE TESTED UNDER ASTM D-4884. ACF TEST RESULTS AVAILABLE UPON REQUEST



CORPORATE OFFICE:
 2831 CARDWELL ROAD
 RICHMOND, VA 23234
 PH: 800-448-3636
 WWW.ACFENVIRONMENTAL.COM

ACF GEOSCRUB DIRTBAG

FOR ADDITIONAL INFORMATION PLEASE CONTACT ACF ENVIRONMENTAL
 PH: 800-448-3636 / WWW.ACFENVIRONMENTAL.COM