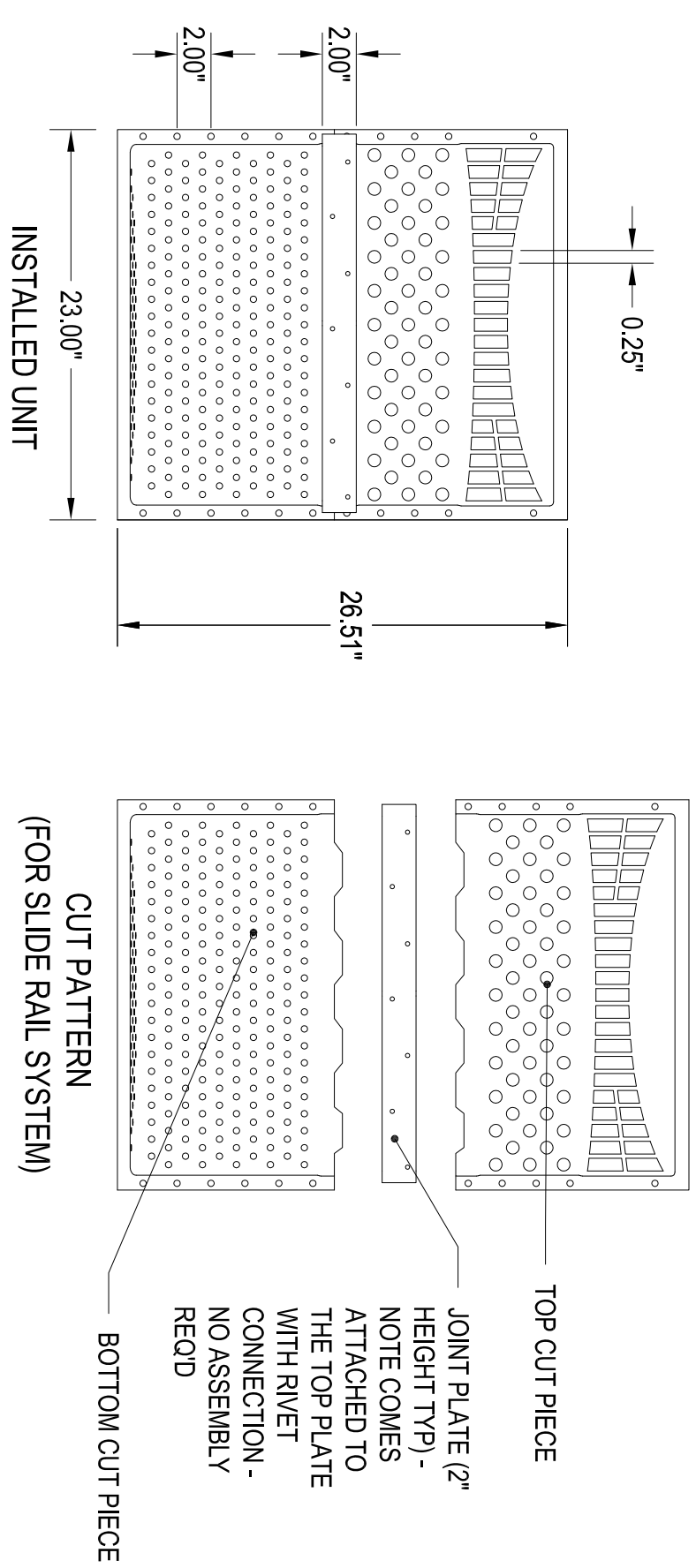


JOINT PLATE SPECIFICATIONS:

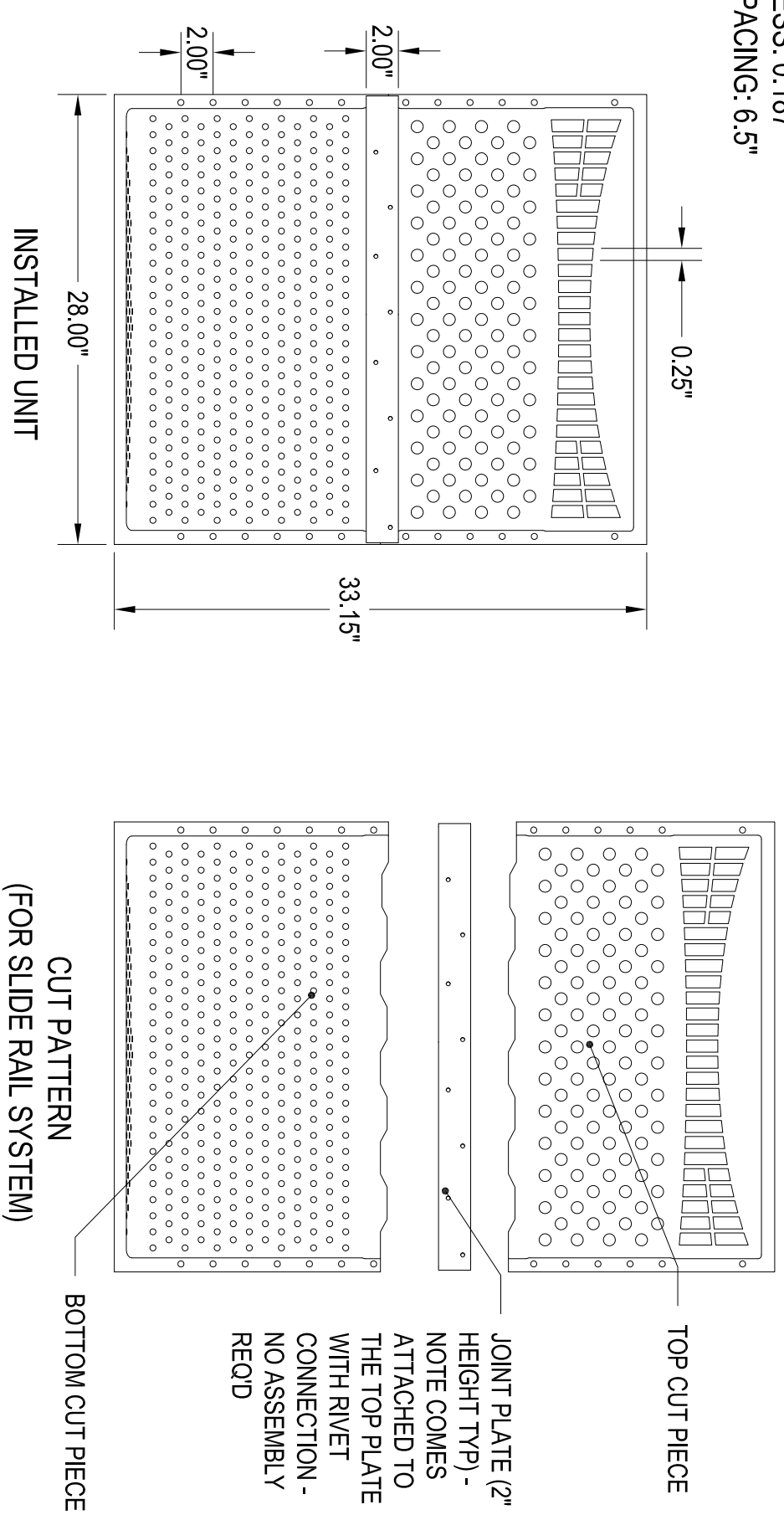
COLOR: BLACK
 MATERIALS: HDPE
 THICKNESS: 0.187"
 HOLE SPACING: 6.5"



1 TRASHGUARD PLUS MODEL TGRD23X24S CUT DETAIL

JOINT PLATE SPECIFICATIONS:

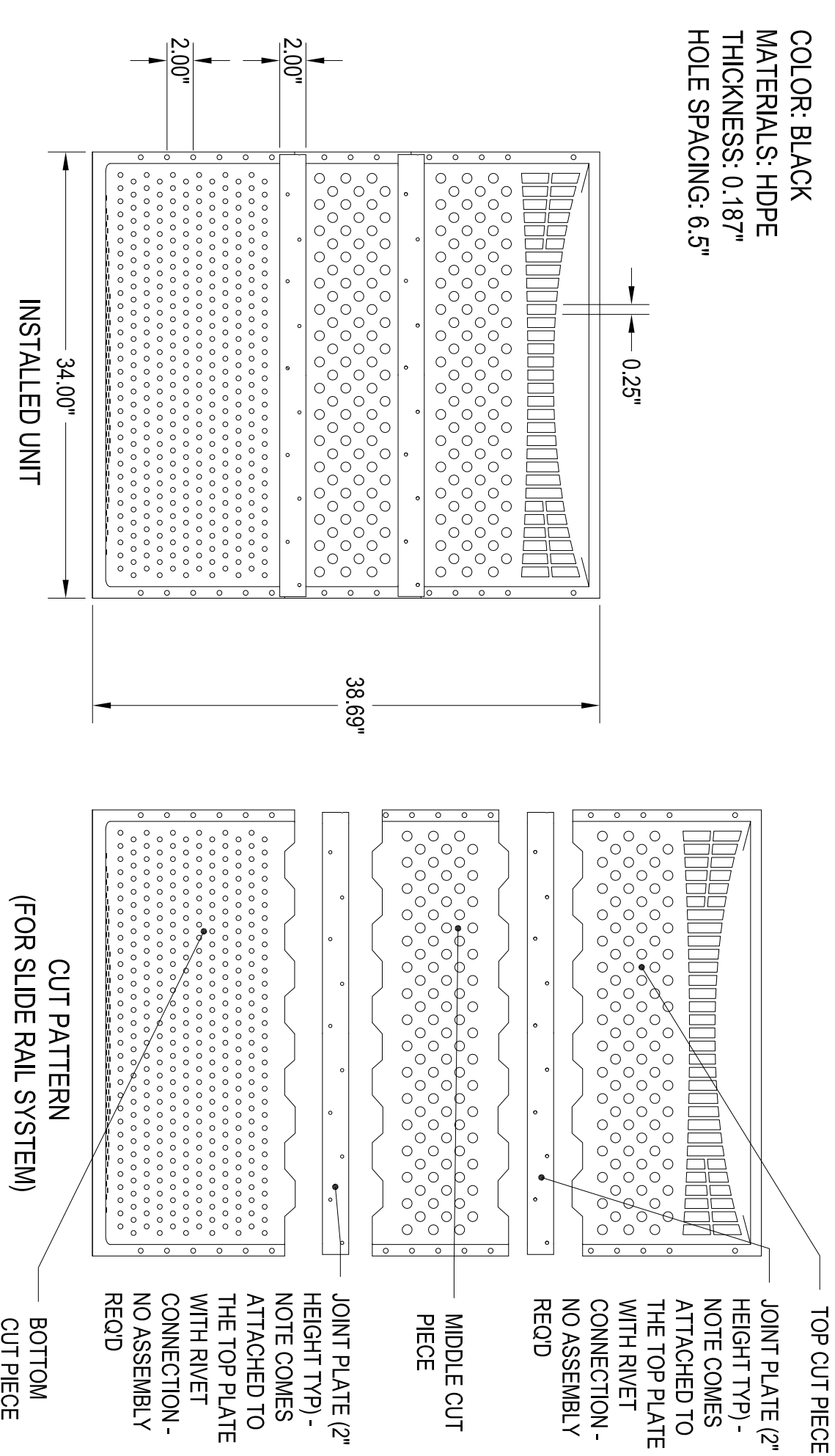
COLOR: BLACK
 MATERIALS: HDPE
 THICKNESS: 0.187"
 HOLE SPACING: 6.5"



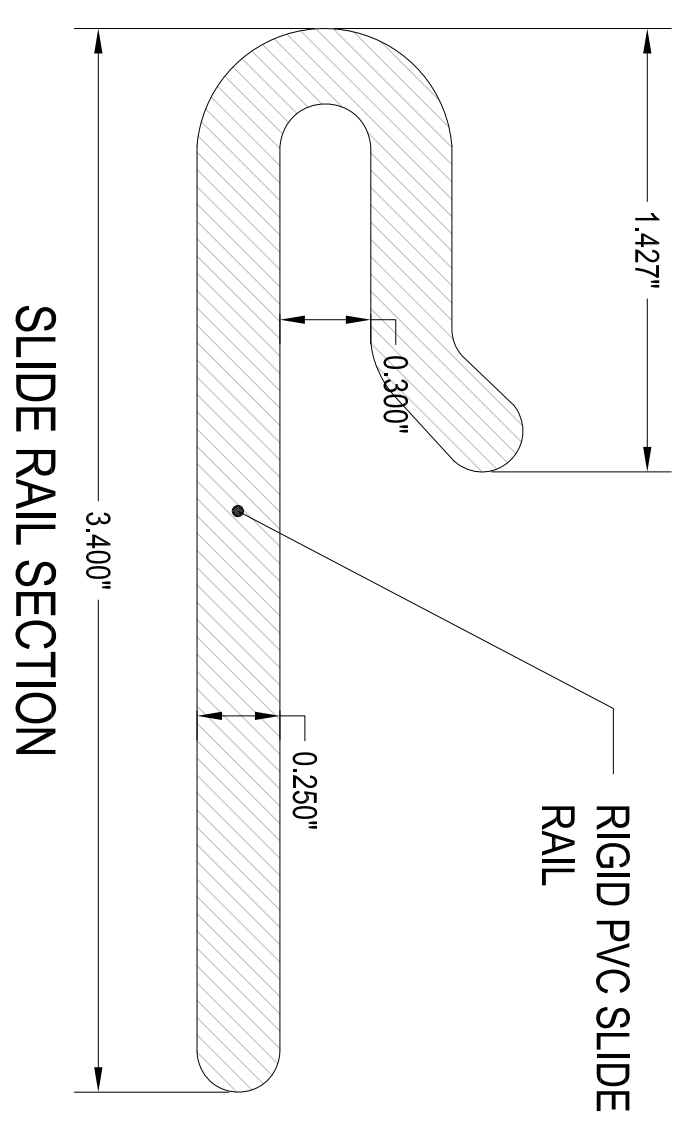
2 TRASHGUARD MODEL TGRD28X30S CUT DETAIL

JOINT PLATE SPECIFICATIONS:

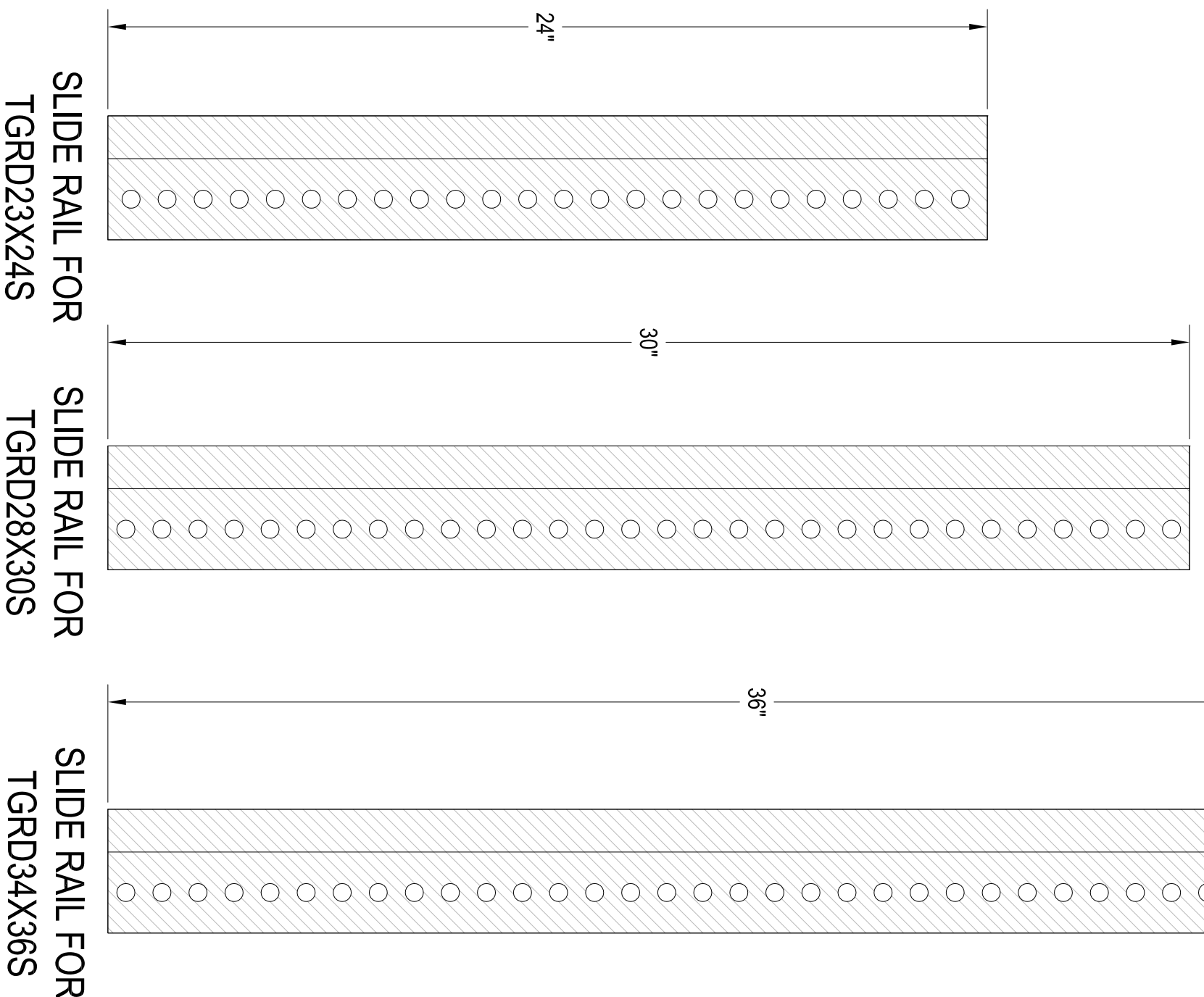
COLOR: BLACK
 MATERIALS: HDPE
 THICKNESS: 0.187"
 HOLE SPACING: 6.5"



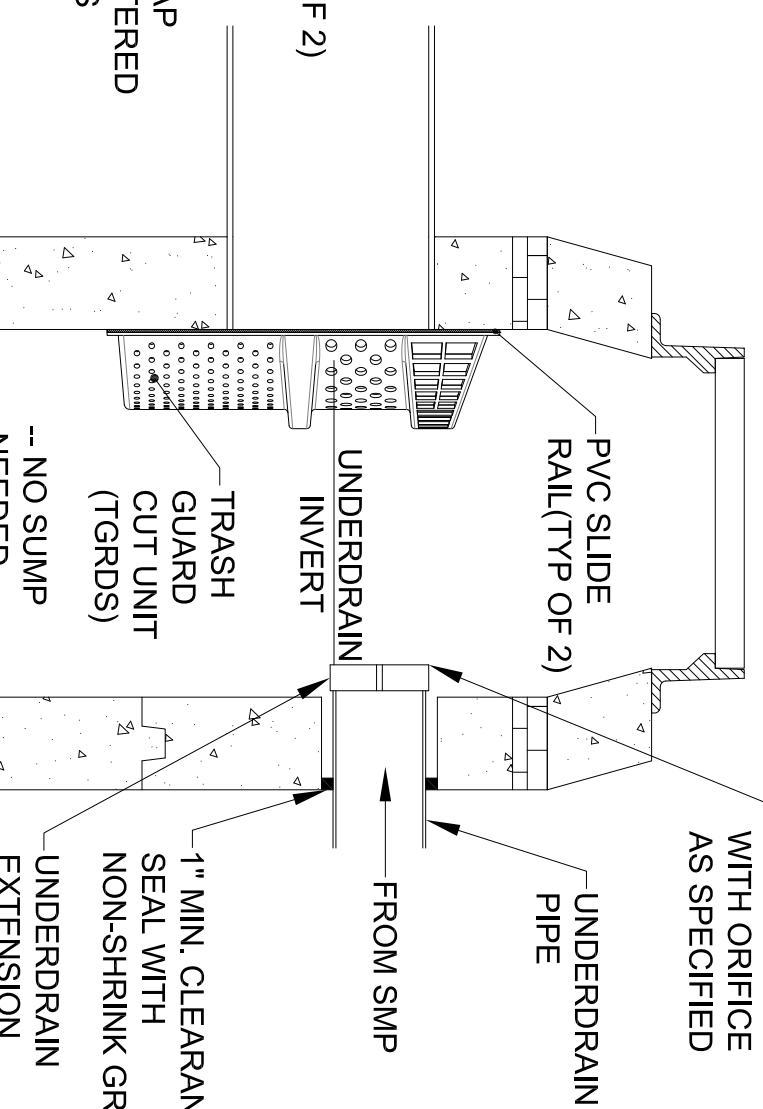
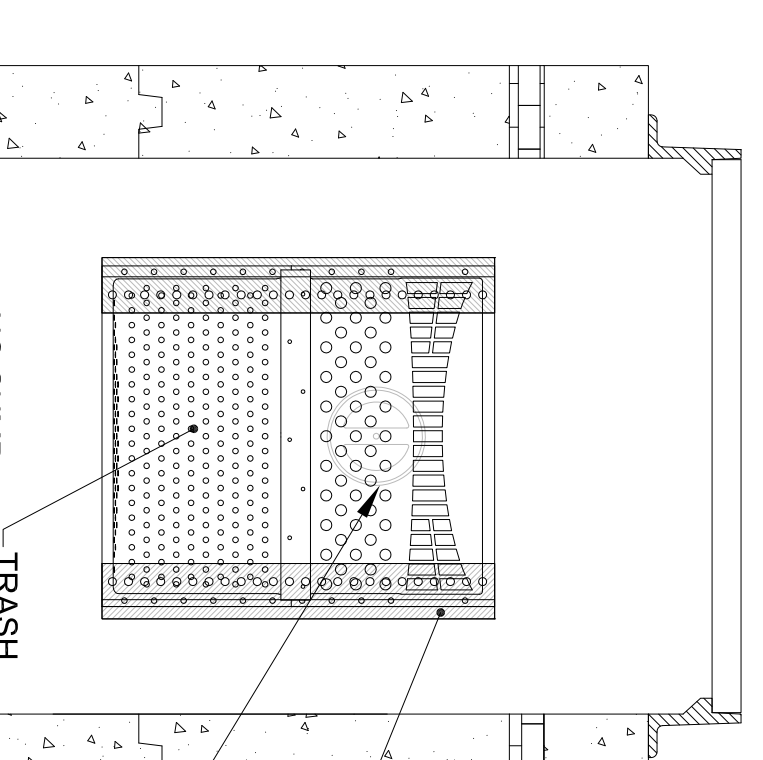
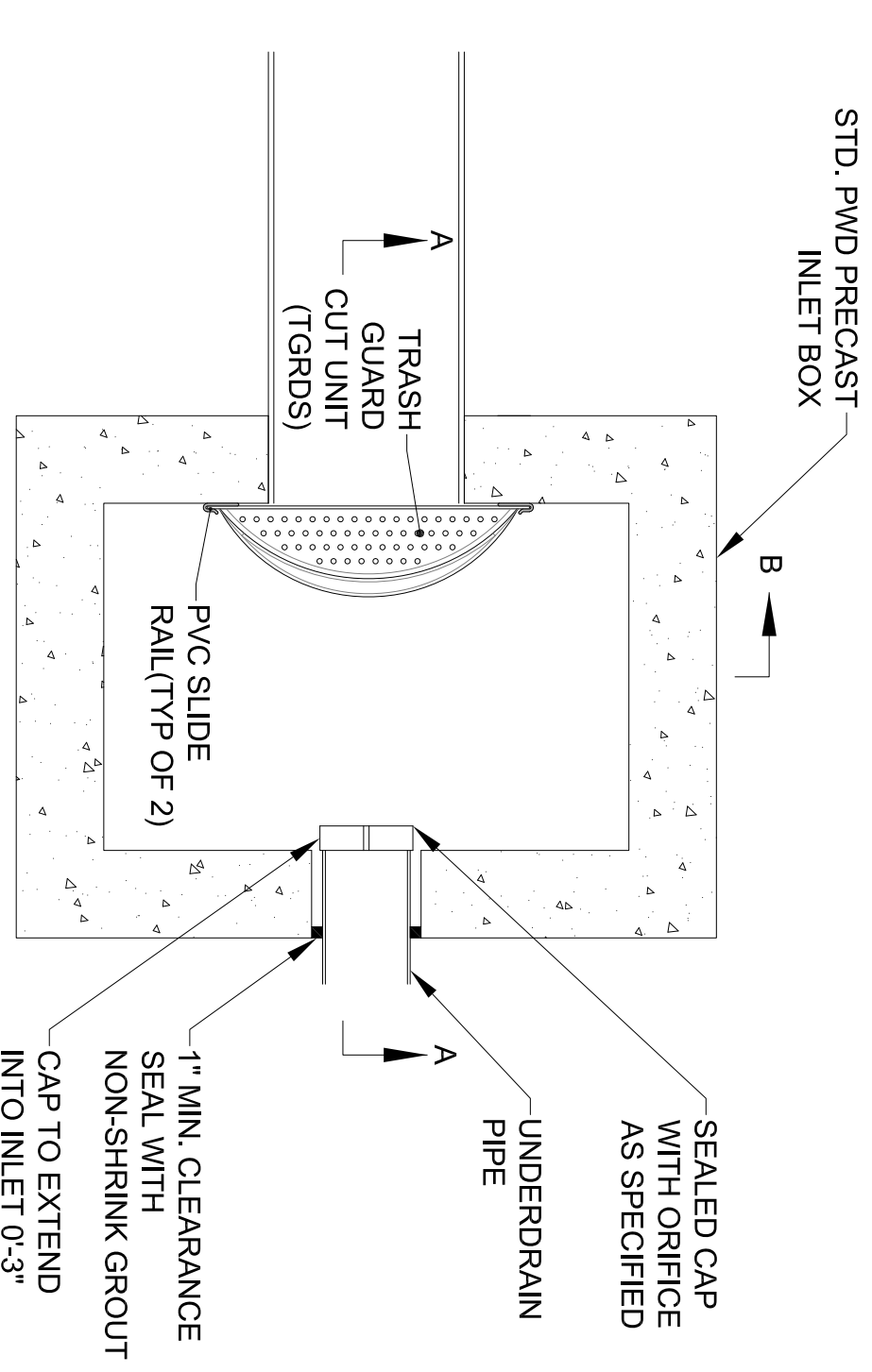
3 TRASHGUARD MODEL TGRD34X36S CUT DETAIL



SLIDE RAIL SECTION



4 TRASHGUARD PLUS TGRDS RAIL DETAIL



- NOTES:**
1. ALL CONCRETE COMPONENTS, INLET GRATE AND FRAME, INLET TRAP, AND CONNECTION TO SEWER SHALL BE PWD STANDARD CONSTRUCTION.
 2. HIGHWAY INLET DEPICTED. DESIGN IS GENERALLY APPLICABLE TO ALL PWD STANDARD INLETS.
 3. THIS INLET HAS A SEWER CONNECTION AND AN UNDERDRAIN ONLY FROM A STORMWATER SYSTEM (SMP).
 4. TOTAL EXTENSION OF UNDERDRAIN AND CAP ASSEMBLY INTO INLET TO BE 0.3" FROM INLET WALL TO END OF CAP.
 5. TRASH GUARD PLUS "CUT" (TGRDS) UNIT (PRE CUT), PVC RAILS AND "PWD TGP HARDWARE KIT" TO BE PROVIDED BY ACF ENVIRONMENTAL.
 6. SEE TRASH GUARD SLIDE RAIL AND INSTALLATION DETAIL FOR GUIDANCE ON INSTALLING UNIT.
 7. SEE TRASHGUARD UNIT DETAILS FOR SYSTEM DIMENSIONS AND AVAILABLE SIZES.
 8. "RAIL STOP BOLT" ONLY NEEDED WHERE OUTLET PIPE IS ABOVE BOTTOM OF DRAIN STRUCTURE.
 9. NO "SUMP" NEEDED FOR TRASHGUARD PLUS TO FUNCTION PROPERLY.

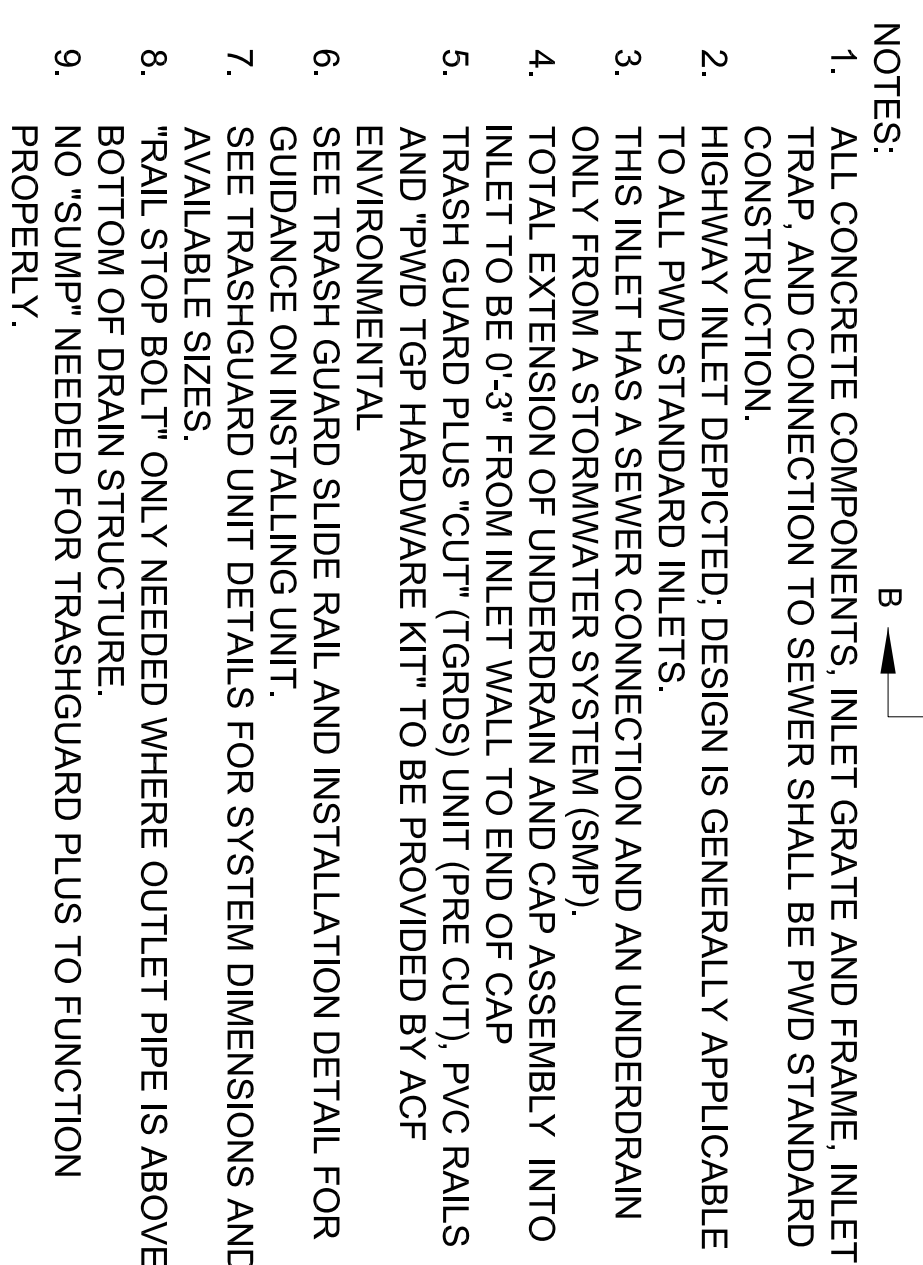


FIGURE 1 - HINGE INSTALLATION

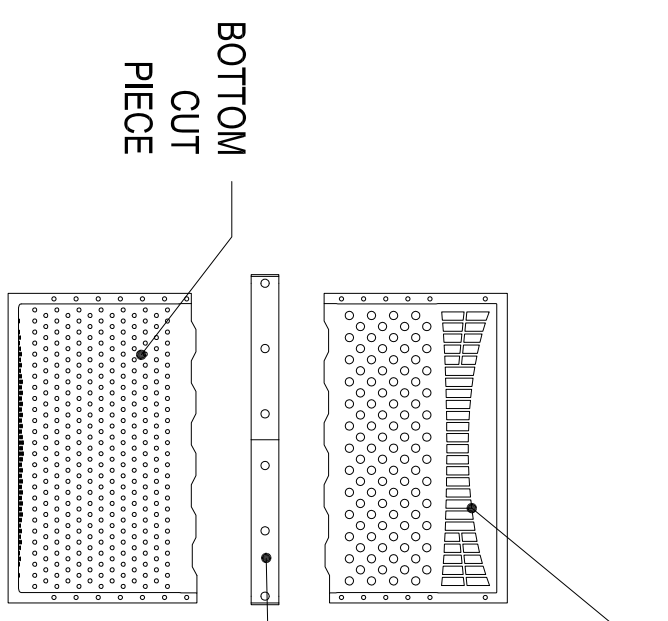


FIGURE 2 TRASH GUARD INSTALLATION

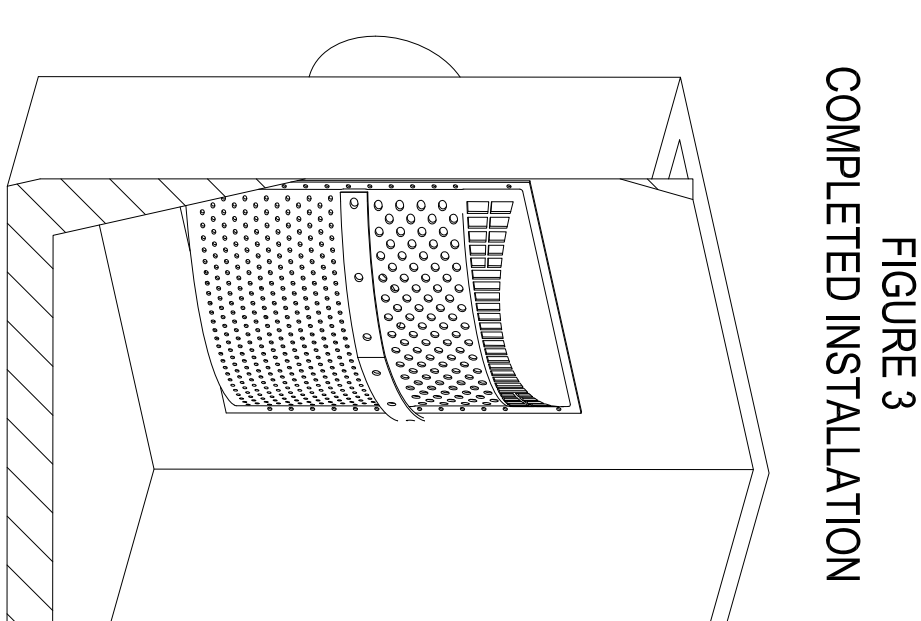


FIGURE 3 COMPLETED INSTALLATION

TRASHGUARD PLUS CUT w RAIL DETAILS

PHILADELPHIA WATER DEPARTMENT STANDARD DETAILS

PHILADELPHIA, PA



FOR ADDITIONAL INFORMATION PLEASE CONTACT:
 ACF ENVIRONMENTAL, 1-800-448-3636
 www.acfenvironmental.com

DATE	REVISION
08.22.16	ISSUED TO P.W.D. FOR REVIEW
10.11.16	UPDATED

TG-1

DATE: JUNE 15, 2016
 SHEET NO.

PROJECT NO.

REV: 0/1/16